



Cascades East Transit Community Connector Shuttle Schedule

ALL TRIPS REQUIRE A RESERVATION

385-8680 OR TOLL FREE: 1-866-385-8680

Call Ride Center by 4:00 the day before your trip. *"Permanent" Reservations are Available*

Madras-Redmond (Route 1-Southbound)

Madras WorkSource Connection	Metolius City Hall	Culver City Hall	Redmond WorkSource Connection
6:15AM	6:22AM	6:26AM	6:55AM
7:50AM	7:57AM	8:01AM	8:30AM
3:37PM	3:44PM	3:48PM	4:22PM
5:45PM	5:52PM	5:56PM	6:25PM

Redmond-Madras (Route 1-Northbound)

Redmond WorkSource Connection	Culver City Hall	Metolius City Hall	Madras WorkSource Connection
6:55AM	7:22AM	7:26AM	7:35AM
2:30PM	2:57PM	3:01PM	3:15PM
4:22PM	4:49PM	4:53PM	5:17PM
6:32PM	6:59PM	7:05PM	7:17PM

Prineville-Redmond (Route 2-Westbound)

Prineville Park & Ride Lot	Powell Butte Christian Church	Redmond WorkSource Connection
5:40AM	5:53AM	6:10AM
6:55AM	7:08AM	7:25AM
8:00AM	8:13AM	8:30AM
3:52PM	4:05PM	4:22PM
4:52PM	5:05PM	5:22PM
6:02PM	6:15PM	6:32PM

Redmond-Prineville (Route 2-Eastbound)

Redmond WorkSource Connection	Powell Butte Christian Church	Prineville Park & Ride Lot
6:25AM	NA	6:55AM
7:25AM	7:42AM	7:55AM
2:30 PM	2:43PM	3:00PM
4:22PM	4:35PM	4:52PM
5:22PM	5:35PM	5:52PM
6:32PM	6:45PM	7:02PM

Redmond-Bend (Route 3-Southbound)

Redmond WorkSource Connection	Bend Hawthorne Station
6:25AM	6:55AM
7:25AM	7:55AM
8:35AM	9:05AM
2:30PM	3:00PM
4:22PM	4:52PM
5:22PM	5:52PM

Bend-Redmond (Route 3-Northbound)

Bend Hawthorne Station	Redmond WorkSource Connection
6:55AM	7:25AM
8:05AM	8:35AM
2:00PM	2:30PM
3:52PM	4:22PM
4:52PM	5:22PM
6:02PM	6:32PM

Redmond-Sisters (Route 3-Westbound)

Redmond WorkSource Connection	Sisters Park & Ride Lot
6:25AM	6:55AM
7:25AM	7:55AM
8:35AM	9:05AM
2:30PM	3:00PM
4:22PM	4:52PM
5:22PM	5:52PM

Sisters-Redmond (Route 3-Eastbound)

Sisters Park & Ride Lot	Redmond WorkSource Connection
6:55AM	7:25AM
8:05AM	8:35AM
-	-
3:30PM	4:00PM
4:52PM	5:22PM
5:52PM	6:22PM

Bend - LaPine (Route 4-Southbound)

Bend Hawthorne Station	LaPine Park & Ride Lot	So Deschutes Co Service Bldg
6:10AM	6:45AM	6:55AM
7:40AM	8:25AM	8:35AM
2:10PM	2:55PM	3:05PM
4:00PM	4:45PM	4:55PM
6:02PM	6:47PM	6:57PM

LaPine - Bend (Route 4- Northbound)

So Deschutes Co Service Bldg	LaPine Park & Ride Lot	Bend Hawthorne Station
6:55AM	-	7:40AM
8:35AM	8:45AM	9:30AM
3:05PM	-	3:55PM
4:55PM	5:05PM	5:50PM
-	-	-



BEND. Bend Area Transit - Hawthorne Station
326 NE Hawthorne. Street parking.



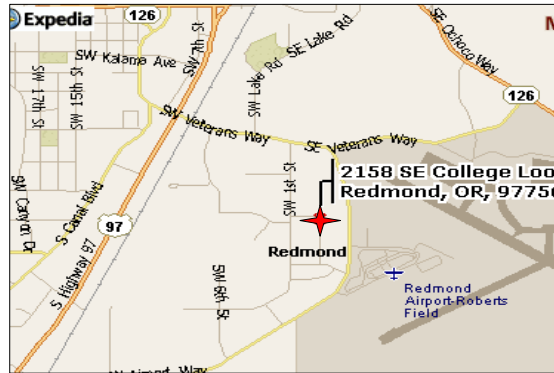
SISTERS. Marked Park and Ride lot spaces on E. Washington, behind the Sisters Pump House



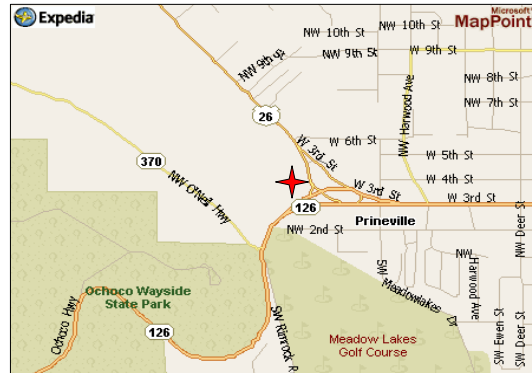
MADRAS. Madras WorkSource Connection (COIC Office), near the DMV. Park in the parking lot.



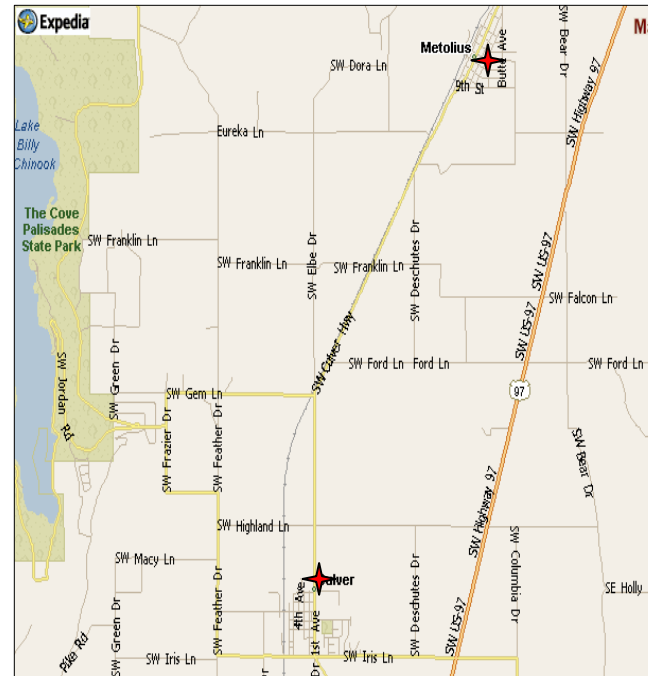
TERREBONNE. Park and Ride lot spaces near Grocery store.



REDMOND. Redmond WorkSource Connection.
2158 SE College Loop.



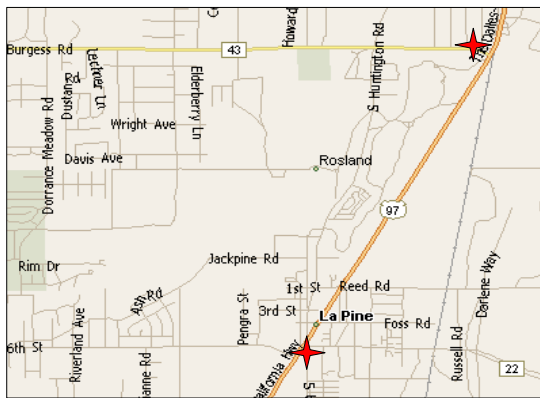
PRINEVILLE. Marked park and ride lot adjacent to the Les Schwab property.



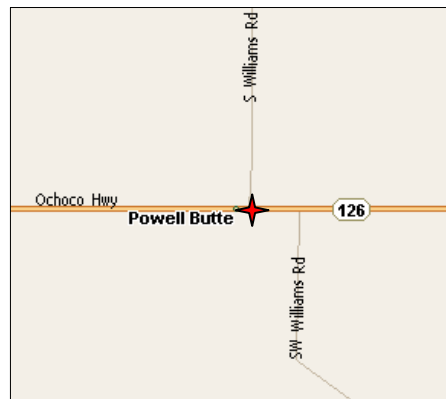
METOLIUS/CULVER:
Metolius: City Hall parking lot
Culver: Park on A St., adjacent to the City Hall/Fire Station. The bus stop is adjacent to the Fire Station bays.



JUNIPER CANYON FIRE HALL.



LAPINE. Two Locations:
1) North- Highway 97 and Burgess Rd. in Wickiup Junction. Directly south of the Wickiup market/grocery, on the west side of Hwy 97 (access from Burgess Rd.)
2) South -Deschutes County Services Bldg., 51340 S. Hwy 97, east side of the highway, just south of Shop Smart grocery.



POWELL BUTTE. Powell Butte Community Church. Follow road around outside of parking lot - park at SW corner.